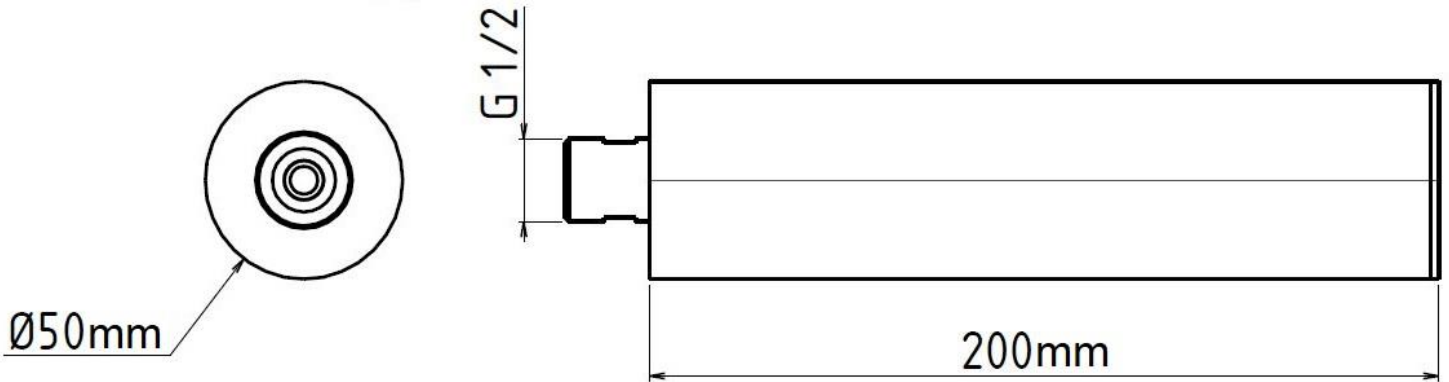


TECHNICAL DATA SHEET

TECHNICAL DRAWING



PHOTO



COLLECTION: TUBE shower head
CODE: ART.32004-3

DESCRIPTION: TUBE ceiling-mount shower head ø2" or ceiling arm l=8" with rain anti-limescale aerator

CUSTOMER:

CUSTOMER CODE:

PRODUCT CODE:

DESCRIPTION:

| QUANTITY OF NOZZLES | NOZZLES COLOUR | FLOW LIMITER |
|---------------------|----------------|-------------------|
| / | / | 6 L/MIN 1.6GPM |

MAINTENANCE TIPS:
 FOLLOW THE ATTACHED INSTRUCTIONS

PRODUCT PACKAGING

- Transparent PLT bag, brown box, gasket and flow limiter with filter, standard label.

WEIGHT SINGLE BOX: Kg 0.61

DIMENSIONS SINGLE BOX: 220X105XH60 mm

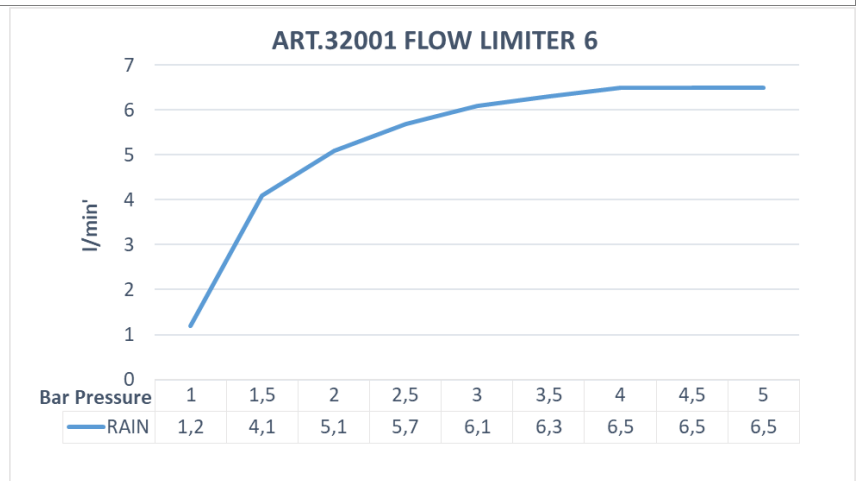
ST PRODUCT: ART.32001

Date of issue 23/09/2021

Last update 04/01/2022

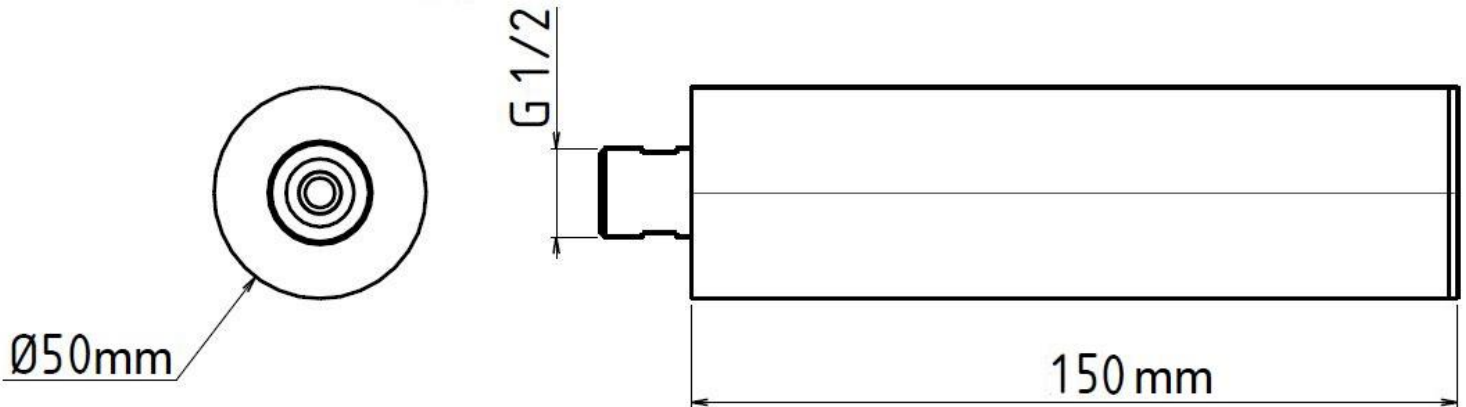
MODULE STP REV. OF 28/01/2021

The reported data cannot be considered binding. We reserve the right to make technical and aesthetic changes without prior notice.



TECHNICAL DATA SHEET

TECHNICAL DRAWING



PHOTO



COLLECTION: TUBE shower head
CODE: PS ZI-32004-2

DESCRIPTION: TUBE ceiling-mount shower head ø2" or ceiling arm l=6" with rain anti-limescale aerator

CUSTOMER:

CUSTOMER CODE:

PRODUCT CODE:

DESCRIPTION:

| QUANTITY OF NOZZLES | NOZZLES COLOUR | FLOW LIMITER |
|---------------------|----------------|-------------------|
| / | / | 6 L/MIN 1.6GPM |

MAINTENANCE TIPS:
 FOLLOW THE ATTACHED INSTRUCTIONS

PRODUCT PACKAGING

- Transparent PLT bag, brown box, gasket and flow limiter with filter, standard label.

WEIGHT SINGLE BOX: Kg 0.52

DIMENSIONS SINGLE BOX: 220X105XH60 mm

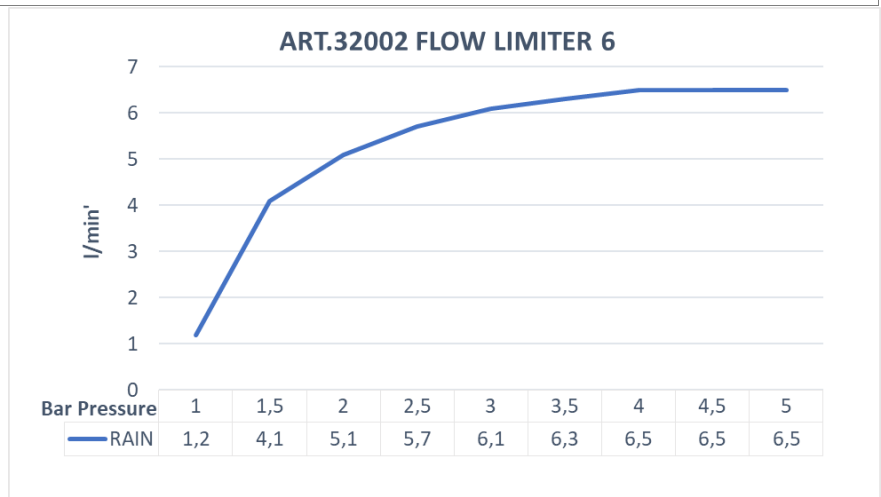
ST PRODUCT: ART.32002

Date of issue 23/09/2021

Last update 04/01/2022

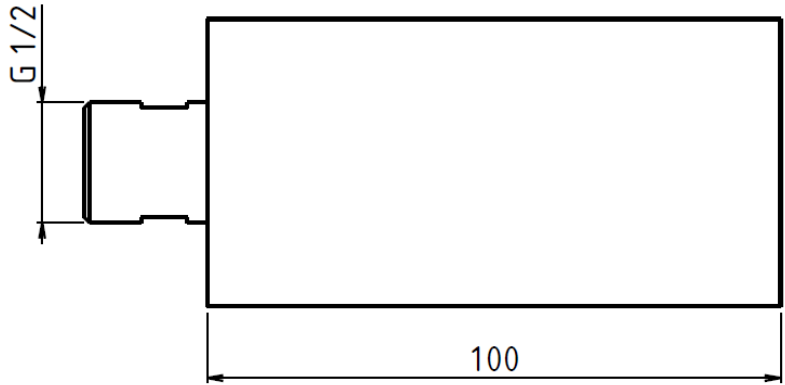
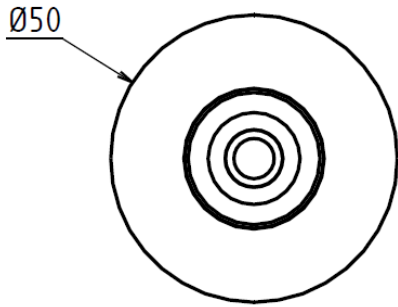
MODULE STP REV. OF 28/01/2021

The reported data cannot be considered binding. We reserve the right to make technical and aesthetic changes without prior notice.



TECHNICAL DATA SHEET

TECHNICAL DRAWING



PHOTO



COLLECTION: TUBE shower head
CODE: PS ZI-32004-1

DESCRIPTION: TUBE ceiling-mount shower head ø2" or ceiling arm l=4" with rain anti-limescale aerator

CUSTOMER:

CUSTOMER CODE:

PRODUCT CODE:

DESCRIPTION:

| QUANTITY OF NOZZLES | NOZZLES COLOUR | FLOW LIMITER |
|---------------------|----------------|-------------------|
| / | / | 6 L/MIN 1.6GPM |

MAINTENANCE TIPS:

FOLLOW THE ATTACHED INSTRUCTIONS

PRODUCT PACKAGING

- Transparent PLT bag, brown box, gasket and flow limiter with filter, standard label.

WEIGHT SINGLE BOX: Kg 0.42

DIMENSIONS SINGLE BOX: 220X105XH60 mm

ST PRODUCT: ART.32003

Date of issue 23/11/2021

Last update 04/01/2022

MODULE STP REV. OF 28/01/2021

The reported data cannot be considered binding. We reserve the right to make technical and aesthetic changes without prior notice.

